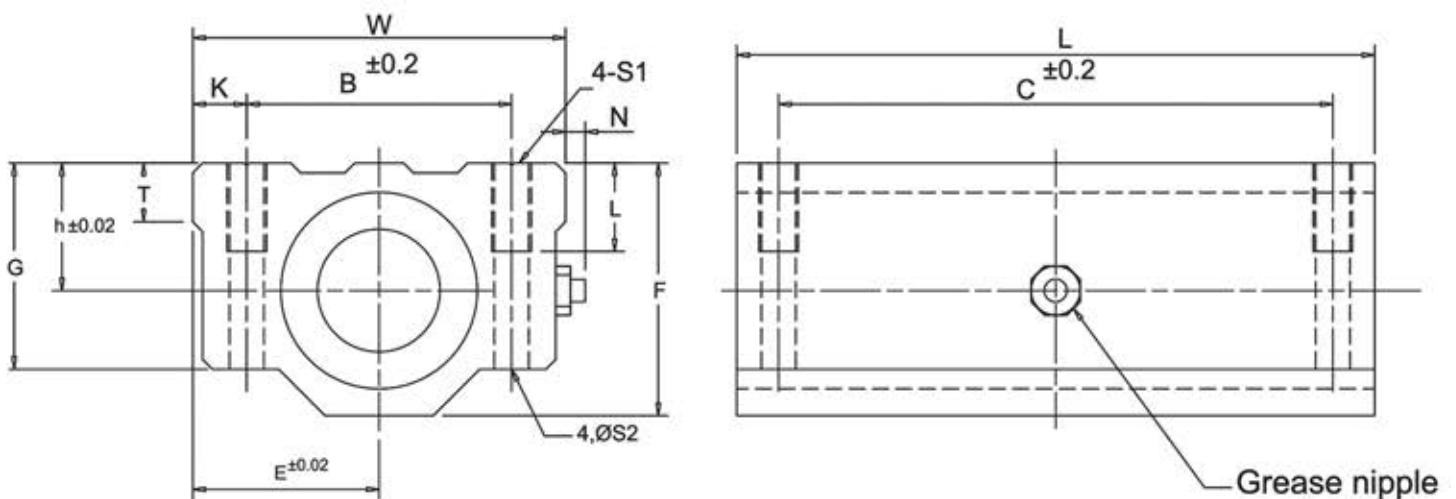


HOUSING UNITS



HOUSING-CLOSE TYPE (HFL-- UU SERIES)

Model No.	Nominal shaft diameter	Main Dimensions							Mounting Dimensions					LM Bearing Model No.	dynamic C (kg)	static Co (kg)	* Unit Weight g	
		h	E	W	L	F	G	T	B	C	K	S ₁	S ₂					ℓ
HFL16	16	19	25	50	85	38.5	32.5	9	36	60	7	M5	4.3	12	LM16UU	125	240	400
HFL20	20	21	27	54	96	41	35	11	40	70		M6	5.2		LM20UU	144	280	570
HFL25	25	26	38	76	130	51.5	42	12	54	100	10	M8	7	18	LM25UU	164	320	1200
HFL30	30	30	39	78	140	59.5	49	15	58	110					LM30UU	250	560	1480
HFL35	35	34	45	90	155	68	54	18	70	120					LM35UU	270	640	2200
HFL40	40	40	51	102	175	78	62	20	80	140	11	M10	8.7	25	LM40UU	350	820	3200

* Includes weight of LM Bearing.