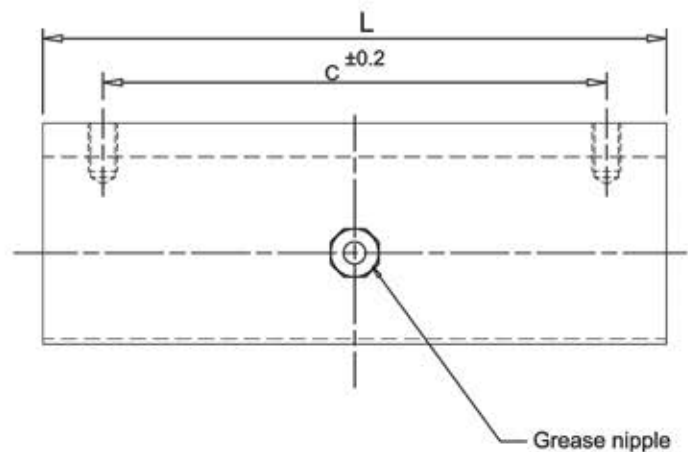
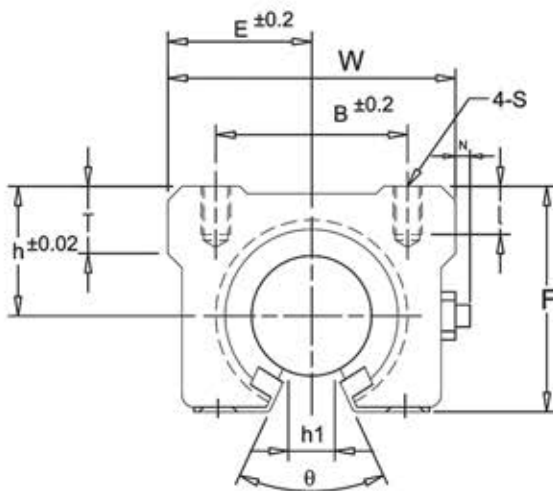
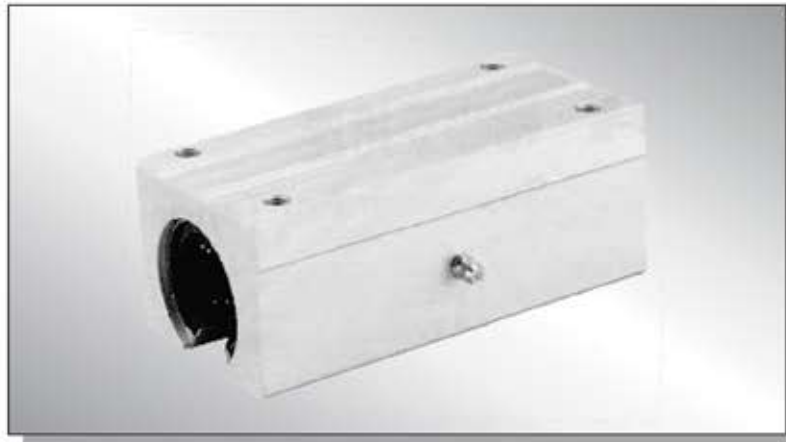


# HOUSING UNITS



## HOUSING-OPEN TYPE (HCL - - UU SERIES)

Model No.	Shaft Dia d	Main Dimensions.						Mounting Dimensions.						Linear ball bearing			
		h ±0.02	E ±0.02	W	L	F	T	h1	θ	B ±0.2	C ±0.2	S	ℓ	LM Bearing No.	Basic dynamic load rating C(kg)	Basic Static load rating Co(kg)	*Unit Weight g
HCL 16	16	20.1	22.5	45	85	33	9	10	80°	32	60	M 5	12	LM 16UU OP	158	240	300
HCL 20	20	23	24	48	96	39	11		60°	35	70	M 6		LM 20UU OP	180	280	400
HCL 25	25	27	30	60	130	47	14	11.5	40	100	LM 25UU OP			200	320	900	
HCL 30	30	33	35	70	140	56	16.8	14	50°	50	110	M 8	18	LM 30UU OP	320	560	1260
HCL 40	40	42	45	90	175	72	22	19		65	140	M 10	20	LM 40UU OP	440	820	2480

\* Includes weight of LM Bearing.