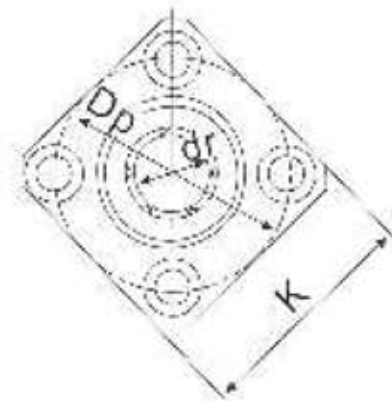
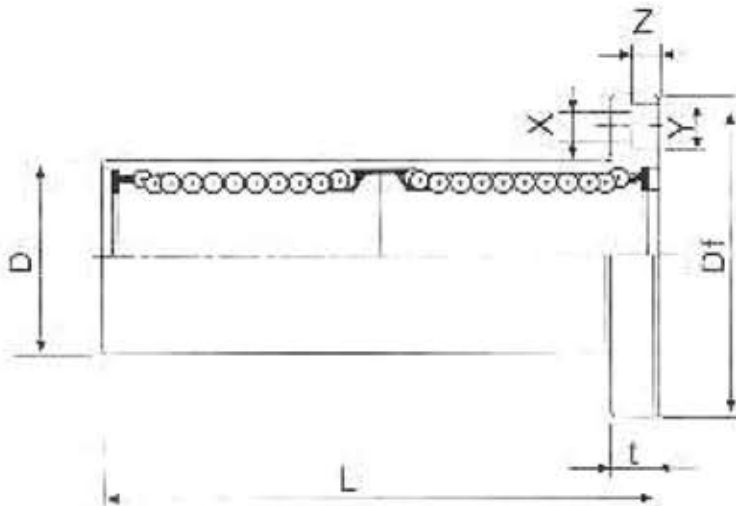


# LINEAR BALL BEARINGS



Example **SMK 16 G W UU SK**

Standard	SMK
Inner contact diameter	16
Retainer material	G
Blank	Steel
G	Resin
Double-wide type	W
Outer cylinder surface treatment	UU
Blank	No surface treatment
SK	Electroless nickel plating
Seal	Blank
Blank	Without seal
UU	Seals on both sides



**SMK...W**

Nominal Part No				Major Dimensions and Tolerance (mm)											Eccentricity μm	Squareness μm	Basic load Rating		Nominal Part No
Steel Retainer	Resin Retainer	Ball Circuit	Weight g	dr Tolerance	D Tolerance	L Tolerance	Flange						Dynamic C(N)	Static Co(N)					
							Df	t	Dp	X	Y	Z							
SMK 6W	SMK 6GW	4	25	6	12	35	28	5	20	3.5	6.5	3.1	15	15	323	530	SMK 6W		
SMK 8W	SMK 8GW	4	43	8	15	45	32	5	24	3.5	6.5	3.1	15	15	431	784	SMK 8W		
SMK 10W	SMK 10GW	4	78	10	19	55	40	6	29	4.5	8	4.1	15	15	588	1,100	SMK 10W		
SMK 12W	SMK 12GW	4	90	12	21	57	42	6	32	4.5	8	4.1	15	15	813	1,570	SMK 12W		
SMK 13W	SMK 13GW	4	108	13	12	61	43	6	33	4.5	8	4.1	15	15	813	1,570	SMK 13W		
SMK 16W	SMK 16GW	5	165	16	28	70	48	6	38	4.5	8	4.1	15	15	1,230	2,350	SMK 16W		
SMK 20W	SMK 20GW	5	225	20	32	80	54	8	43	5.5	9.5	5.1	20	20	1,400	2,740	SMK 20W		
SMK 25W	SMK 25GW	6	500	25	40	112	62	8	51	5.5	9.5	5.1	20	20	1,580	3,140	SMK 25W		
SMK 30W	SMK 30GW	6	590	30	45	123	74	10	60	6.6	11	6.1	20	20	2,490	5,490	SMK 30W		
SMK 35W	SMK 35GW	6	930	35	52	135	82	10	67	6.6	11	6.1	25	25	2,650	6,270	SMK 35W		
SMK 40W	SMK 40GW	6	1,380	40	60	154	96	13	78	9	14	8.1	25	25	3,430	8,040	SMK 40W		
SMK 50W	SMK 50GW	6	3,400	50	80	192	116	13	89	9	14	8.1	25	25	6,080	15,900	SMK 50W		
SMK 60W	SMK 60GW	6	4,060	60	90	211	134	18	112	11	17.5	11.1	30	30	7,550	20,000	SMK 60W		

SI Unit IN= 0. 102 kgf