



Quality Uncompromised

Support Unit



Support units are special parts for bearings used in a set together with a ball screw. Support units come in various shapes, such as square, round and round 2-surface chamfered. There are also 2 different types—models used at the fixed side and models used at the support side.

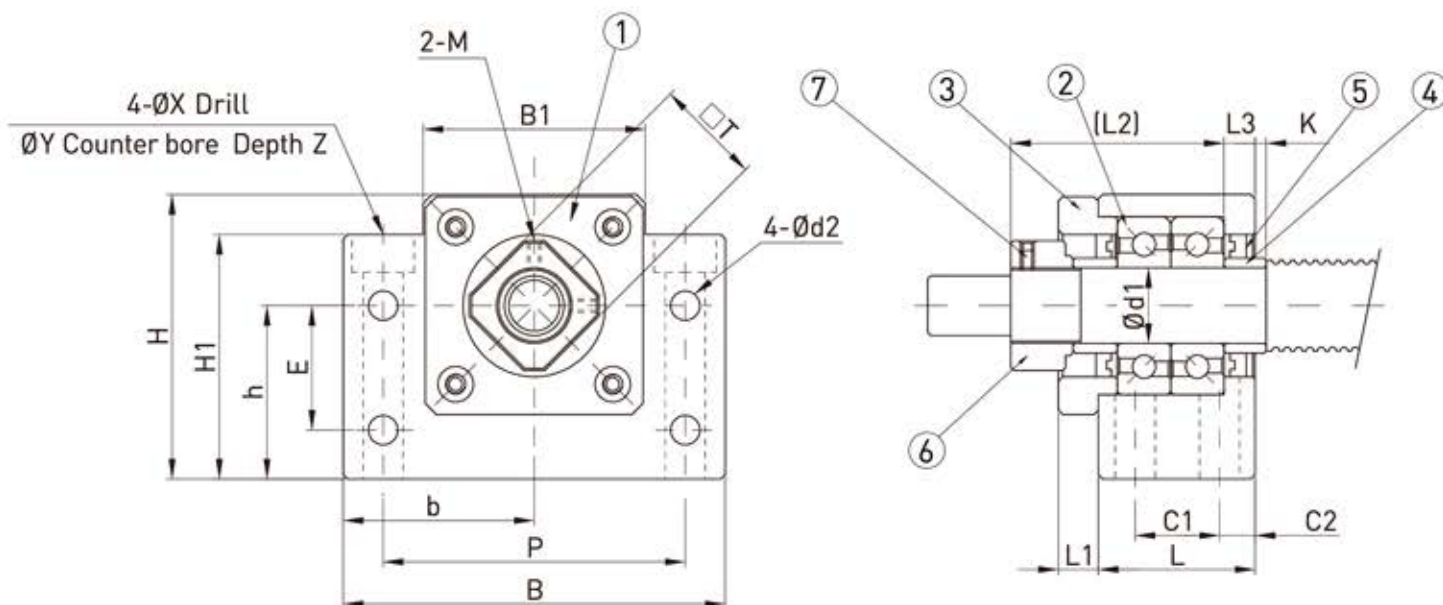
Support units attach to the fixed side and support side of a screw shaft, enabling the screw shaft to be mounted in the correct position.

A bearing integrated into the body of the support unit enables stable shaft rotation. Support units are available with various types of bearings, sizes, shapes and surface treatments. Models for various applications, operating environments and mounting spaces can be selected. Support units can be mounted in equipment as-is, with no need for additional processes or machining.

SUPPORT UNIT BK (Fixed-side rectangular type)



Part No.	Part Name	Qty
1	Housing	1
2	Hexagonal socket-head setscrew with set piece	2
3	Bearing	1 pair
4	Holding lid	1
5	Collar	2
6	Seal	2
7	Set screw	1



Unit: mm

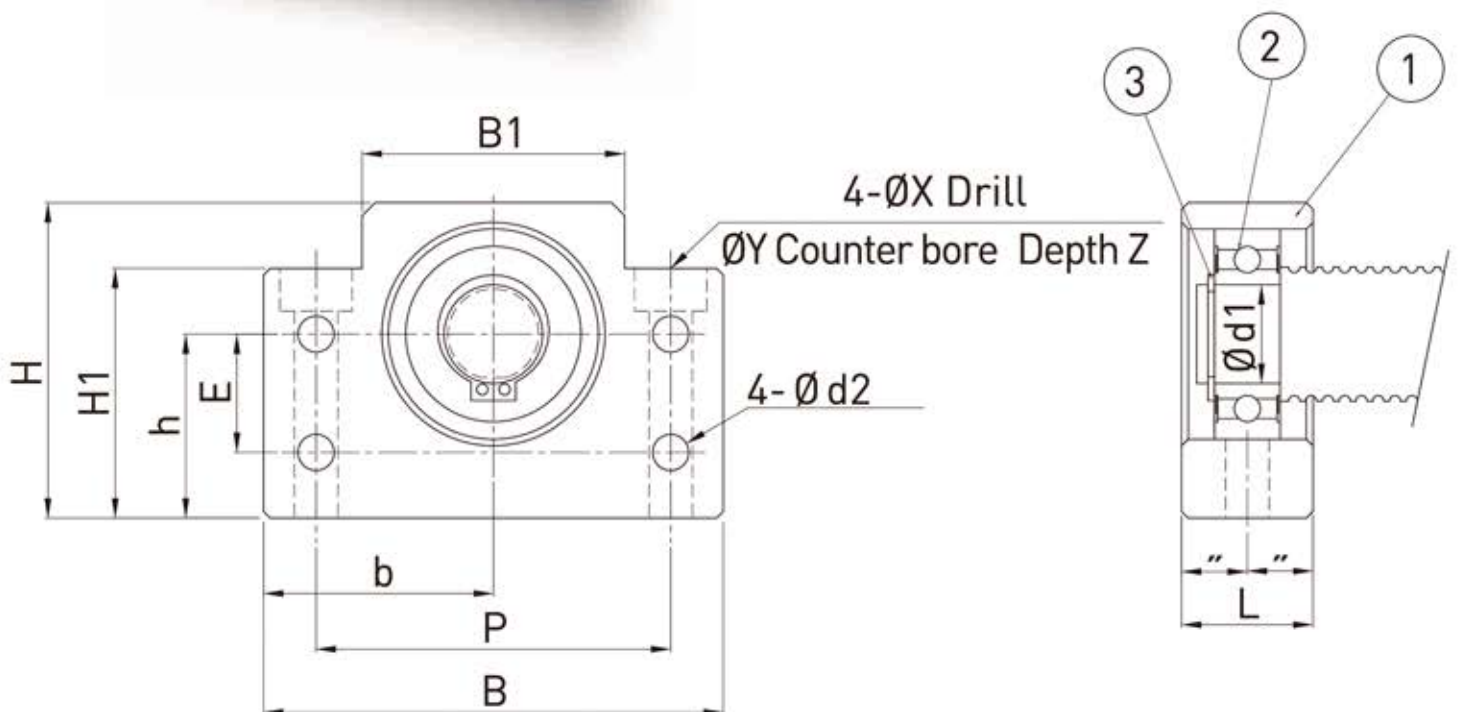
Type	d1	L	L1	L2	L3	K	B	H	b (Note 1)	h (Note 1)	B1	H1	E	P	C1	C2	d2	X	Y	Z	M	T	Weight (kg)
BK10	10	25	5	29.5	5	0.5	60	39	30	22	34	32.5	15	46	13	6	5.5	6.6	10.8	5	M3	16	0.4
BK12	12	25	5	29.5	5	0.5	60	43	30	25	34	32.5	18	46	13	6	5.5	6.6	10.8	1.5	M4	19	0.45
BK15	15	27	6	32	6	0	70	48	35	28	40	38	18	54	15	6	5.5	6.6	11	6.5	M4	22	0.6
BK17	17	35	9	44	7	0	86	64	43	39	50	55	28	68	19	8	6.6	9	14	8.5	M4	24	1.3
BK20	20	35	8	43	8	0	88	60	44	34	52	50	22	70	19	8	6.6	9	14	8.5	M4	30	1.3
BK25	25	42	12	54	9	0	106	80	53	48	64	70	33	85	22	10	9	11	17	11	M6	35	2.4
BK30	30	45	14	61	9	0	128	89	64	51	76	78	33	102	23	11	11	14	20	13	M6	40	3.4
BK35	35	50	14	67	12	0	140	96	70	52	88	79	35	114	26	12	11	14	20	13	M6	50	4.4
BK40	40	61	18	76	15	0	160	110	80	60	100	90	37	130	33	14	14	18	26	17.5	M6	50	6.8

Note: 1. Tolerance of Height (h) and tolerance of Width (b) refer to the precision of standard bearing.
2. Specifications are subject to change without notice.

SUPPORT UNIT BF (Supported-side rectangular type)



Part No	Part Name	Qty
1	Housing	1
2	Snap ring	1
3	Bearing	1



Unit: mm

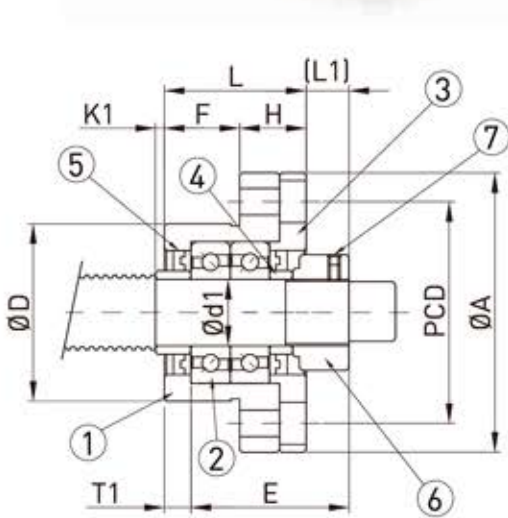
Type	d1	L	B	H	b (Note 1)	h (Note 1)	B1	H1	E	P	d2	X	Y	Z	Bearing	Snap ring	Weight (kg)
BF10	8	20	60	39	30	22	34	32.5	15	46	5.5	6.6	10.8	5	608ZZ	S08	0.3
BF12	10	20	60	43	30	25	34	32.5	18	46	5.5	6.6	10.8	1.5	6000ZZ	S10	0.35
BF15	15	20	70	48	35	28	40	38	18	54	5.5	6.6	11	6.5	6002ZZ	S15	0.4
BF17	17	23	86	64	43	39	50	55	28	68	6.6	9	14	8.5	6203ZZ	S17	0.75
BF20	20	26	88	60	44	34	52	50	22	70	6.6	9	14	8.5	6004ZZ	S20	0.77
BF25	25	30	106	80	53	48	64	70	33	85	9	11	17	11	6205ZZ	S25	1.45
BF30	30	32	128	89	64	51	76	78	33	102	11	14	20	13	6206ZZ	S30	1.95
BF35	35	32	140	96	70	52	88	79	35	114	11	14	20	13	6207ZZ	S35	2.25
BF40	40	37	160	110	80	60	100	90	37	130	14	18	26	17.5	6208ZZ	S40	3.3

Note: 1. Tolerance of Height (h) and tolerance of Width (b) refer to the precision of standard bearing.
2. Specifications are subject to change without notice.

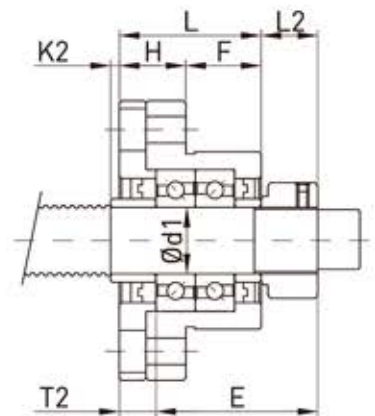
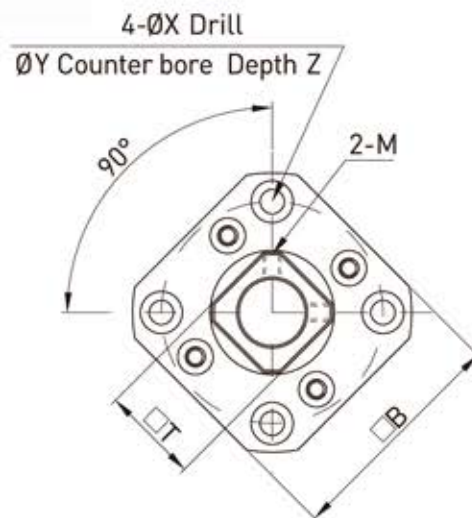
SUPPORT UNIT FK (Fixed-side flange type)



Part No.	Part Name	Qty
1	Housing	1
2	Hexagonal socket-head setscrew with set piece	2
3	Bearing	1 pair
4	Holding lid	1
5	Collar	2
6	Seal	2
7	Set screw	1



Mounting method A



Mounting method B

Unit: mm

Mounting method A | Mounting method B

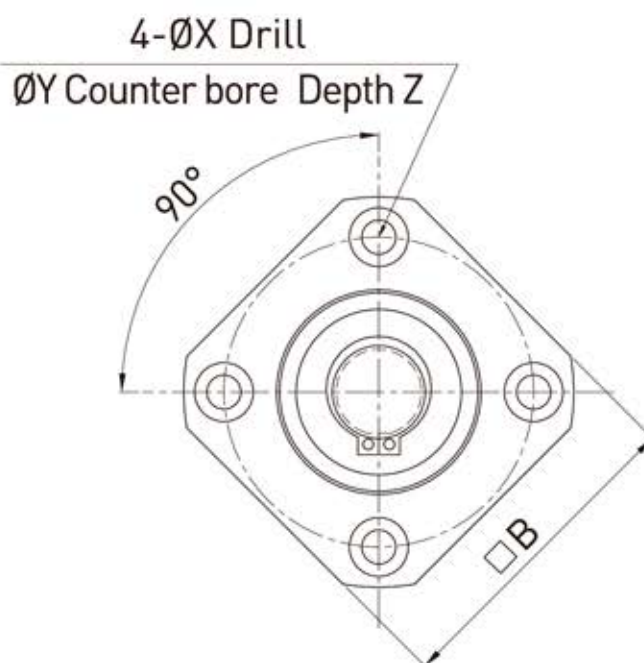
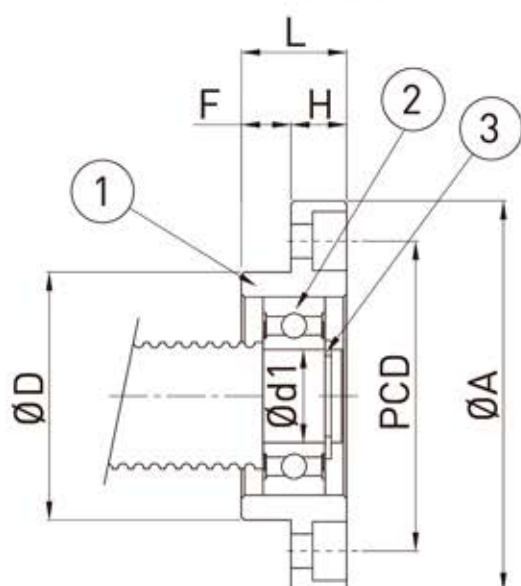
Type	d1	L	H	F	E	D (Note 1)	A	PCD	B	L1	T1	K1	L2	T2	K2	X	Y	Z	M	T	Weight (kg)
FK05	5	16.5	6	10.5	18.5	20	34	26	26	5.5	3.5	0	5	3	0.5	3.4	6.5	4	M3	11	0.1
FK06	6	20	7	13	22	22	36	28	28	5.5	3.5	1.5	6.5	4.5	0.5	3.4	6.5	4	M3	12	0.1
FK08	8	23	9	14	26	28	43	35	35	7	4	1.5	8	5	0.5	3.4	6.5	4	M3	14	0.16
FK10	10	27	10	17	29.5	34	52	42	42	7.5	5	0.5	8.5	6	-0.5	4.5	8	5	M3	16	0.25
FK12	12	27	10	17	29.5	36	54	44	44	7.5	5	0.5	8.5	6	-0.5	4.5	8	5	M4	19	0.26
FK15	15	32	15	17	36	40	63	50	52	10	6	4	12	8	2	5.5	9.5	6	M4	22	0.4
FK17	17	45	22	23	47	50	77	62	61	11	9	1	14	12	-2	6.6	11	10	M4	24	0.85
FK20	20	52	22	30	50	57	85	70	68	8	10	1	12	14	-3	6.6	11	10	M4	30	1.2
FK25	25	57	27	30	60	63	98	80	79	13	10	5	20	17	-2	9	15	13	M6	35	1.6
FK30	30	62	30	32	61	75	117	95	93	11	12	-3	17	18	-9	11	17.5	15	M6	40	2.38

Note: Specifications are subject to change without notice.

SUPPORT UNIT FF (Supported-side flange type)



Part No	Part Name	Qty
1	Housing	1
2	Bearing	1
3	Snap ring	1



Unit: mm

Type	d1	L	H	F	D (Note 1)	A	PCD	B	X	Y	Z	Bearing	Snap ring	Weight (kg)
FF06	6	10	6	4	22	36	28	28	3.4	6.5	4	606ZZ	S06	0.08
FF10	8	12	7	5	28	43	35	35	3.4	6.5	4	608ZZ	S08	0.1
FF12	10	15	7	8	34	52	42	42	4.5	8	4	6000ZZ	S10	0.15
FF15	15	17	9	8	40	63	50	52	5.5	9.5	5.5	6002ZZ	S15	0.22
FF17	17	20	11	9	50	77	62	61	6.6	11	6.5	6203ZZ	S17	0.35
FF20	20	20	11	9	57	85	70	68	6.6	11	6.5	6204ZZ	S20	0.45
FF25	25	24	14	10	63	98	80	79	9	14	8.5	6205ZZ	S25	0.66
FF30	30	27	18	9	75	117	95	93	11	17	11	6206ZZ	S30	1.05

Note: Specifications are subject to change without notice.