



*Quality Uncompromised*

## PRECISION LOCKNUTS

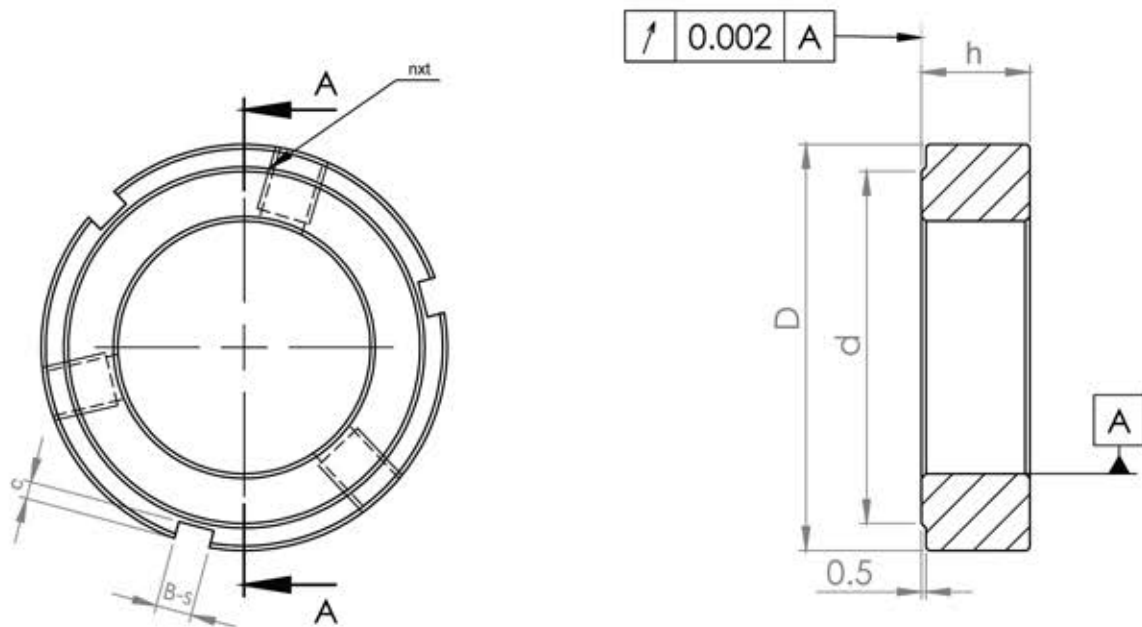


## KMR SERIES (RADIAL LOCKING)

The Locknut is required for securing the fixed support unit to the Ballscrew Shaft. KMR type of Locknut provides easy fastening to the screw shaft thread. It includes an anti-loosening mechanism using a grub screw that prevents the locknuts from loosening.

- **Material** : EN19
- **Hardness** : HRC 28-32.
- **Thread Accuracy** : ISO 4H
- **Manufacturing method** : High Precision Turning
- **No thrust washer or keyway required.**
- **Easy to assemble and disassemble.**





SECTION A-A  
SCALE 1 : 0.8

Unit: mm

Size	D	h	B-s	c	d	nxt	MAX.Nm
KMR M10x1.0	18	8	3-3	1.6	15	2-M4	3.5
KMR M12x1.0	20	8	3-3	1.6	17	2-M4	3.5
KMR M15x1.0	25	8	3-3	1.8	21.5	2-M4	3.5
KMR M17x1.0	28	10	3-4	2	24	2-M5	4.5
KMR M20x1.0	32	10	3-4	2	28	3-M5	4.5
KMR M20x1.5	32	10	3-4	2	28	3-M5	4.5
KMR M22x1.5	35	10	3-4	2	31	3-M5	4.5
KMR M24x1.5	38	12	3-5	2	34	3-M6	8
KMR M25x1.5	38	12	3-5	2	34	3-M6	8
KMR M30x1.5	45	12	3-5	2	41	3-M6	8
KMR M35x1.5	52	12	3-5	2	48	3-M6	8
KMR M40x1.5	58	14	3-6	2.5	53	3-M6	8
KMR M45x1.5	65	14	3-6	2.5	60	3-M6	8
KMR M50x1.5	70	14	3-6	2.5	65	3-M8	18
KMR M55x2.0	75	16	3-7	3	69	3-M8	18
KMR M60x2.0	80	16	3-7	3	74	3-M8	18
KMR M65x2.0	85	16	3-7	3	79	3-M8	18
KMR M70x2.0	92	18	3-8	3.5	85	3-M8	18



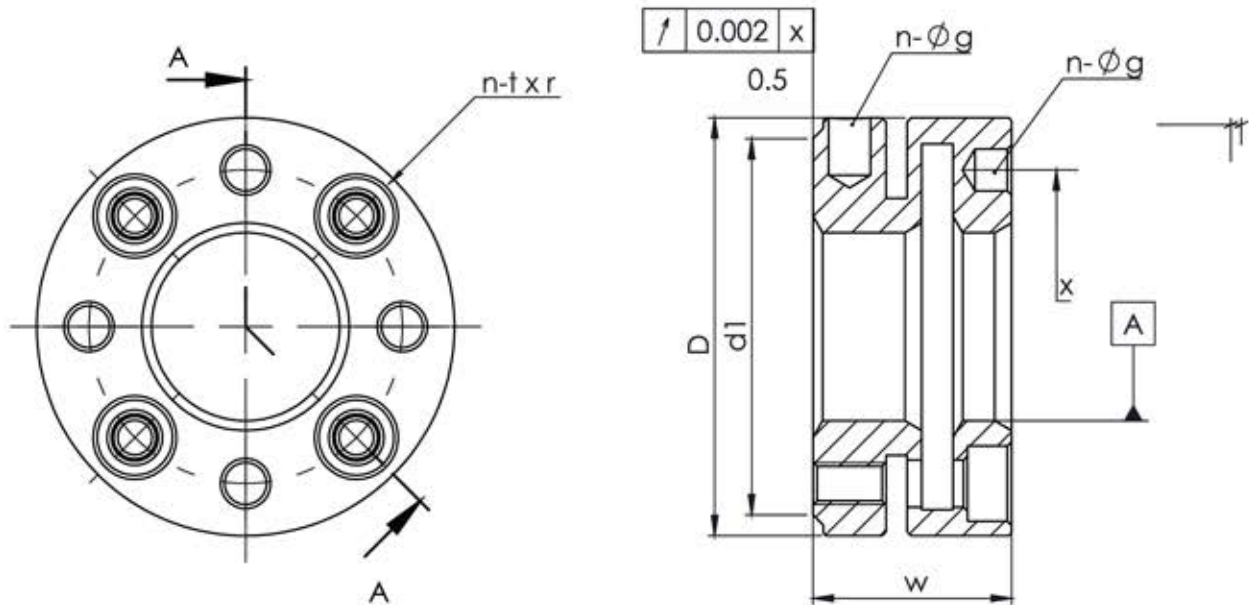
Size	D	h	B-s	c	d	nxt	MAX.Nm
KMR M75x2.0	98	18	3-8	3.5	91	3-M8	18
KMR M80x2.0	105	18	6-8	3.5	98	3-M8	18
KMR M85x2.0	110	18	6-8	3.5	103	3-M8	18
KMR M90x2.0	120	20	6-10	4	112	3-M8	18
KMR M95x2.0	125	20	6-10	4	117	3-M8	18
KMR M100x2.0	130	20	6-10	4	122	3-M8	18
KMR M105x2.0	140	22	6-12	5	130	3-M8	18
KMR M1 10x2.0	145	22	6-12	5	135	3-M8	18
KMR M1 115x2.0	150	22	6-12	5	140	3-M8	18
KMR M120x2.0	155	24	6-12	5	145	3-M8	18
KMR M125x2.0	160	24	6-12	5	150	3-M8	18
KMR MI 30x2.0	165	24	6-12	5	155	3-M8	18
KMR M135x2.0	175	26	6-14	6	163	3-M10	35
KMR M140x2.0	180	26	6-14	6	168	3-M10	35
KMR M145x2.0	190	26	6-14	6	178	3-M10	35
KMR M150x2.0	195	26	6-14	6	183	3-M10	35
KMR M155x3.0	200	28	6-16	7	186	3-M10	35
KMR M160x3.0	210	28	6-16	7	196	3-M10	35
KMR M165x3.0	210	28	6-16	7	196	3-M10	35
KMR M1 70x3.0	220	28	6-16	7	206	3-M10	35
KMR M180x3.0	230	30	6-18	8	214	3-M12	60
KMR M190x3.0	240	30	6-18	8	224	3-M12	60
KMR M200x3.0	250	32	6-18	8	234	3-M12	60
KMR M210x4.0	270	34	6-18	8	245	3-M12	85
KMR M220x3.0	270	34	6-18	8	245	3-M12	85
KMR M220x4.0	270	34	6-18	8	254	3-M12	85
KMR M230x3.0	280	34	6-18	8	264	3-M12	85
KMR M240x3.0	290	34	6-18	8	265	3-M12	85
KMR M240x4.0	290	34	6-18	8	274	3-M12	85
KMR M245x3.0	295	34	6-18	8	279	3-M12	85
KMR M260x3.0	310	36	6-18	8	285	3-M12	85
KMR M260x4.0	310	36	6-18	8	294	3-M12	85
KMR M275x4.0	325	36	6-18	8	309	3-M12	85
KMR M280x4.0	330	36	6-18	8	314	3-M12	85
KMR M300x4.0	350	36	6-18	8	334	3-M12	85
KMR M440x4.0	520	46	6-20	10	500	6-M20	85
KMR M460x4.0	540	46	6-20	10	520	6-M20	85

## KMK SERIES (CLASP LOCKING)

For Exact and free positioning safe locking without complications. The series locknut flank surface is produced by High precision Turning. The series is specially designed to generate powerful braking capacity due to deformation of locknut itself which makes the male and female threads contact tightly together.

- **Material** : EN19
- **Hardness** : HRC 28-32.
- **Thread Accuracy** : ISO 4H
- **Manufacturing method** : High Precision Turning
- **Easy Assembly and Disassembly.**
- **Can be reused if handled correctly.**





Unit: mm

Size	D	w	d1	n-txr	x	n	g
KMK M17x1P	37	18	32	4-M4x12	26	4	4
KMK M20x1.0P	40	18	36	4-M4x12	30	4	4
KMK M20x1.5P	40	18	36	4-M4x12	30	4	4
KMK M22x1.5P	42	18	38	4-M4x12	32	4	4
KMK M24x1.5P	44	18	41	4-M4x12	34	4	4
KMK M25x1.5P	45	20	41	4-M4x14	35	4	5
KMK M30x1.5P	48	20	45	4-M4x14	39	4	5
KMK M35x1.5P	53	22	50	4-M4x16	44	4	5
KMK M40x1.5P	58	22	55	4-M4x16	49	4	5
KMK M45x1.5P	68	22	63	6-M4x16	57	6	6
KMK M50x2.0P	70	25	66	6-M4x18	60	6	6
KMK M55x1.5P	75	25	71	6-M4x18	65	6	6
KMK M55x2.0P	75	25	71	6-M4x18	65	6	6
KMK M60x1.5P	84	26	79	6-M5x18	72	6	6
KMK M60x2.0P	84	26	79	6-M5x18	72	6	6
KMK M65x1.5P	88	28	84	6-M5x20	77	6	6
KMK M65x2.0P	88	28	84	6-M5x20	77	6	6
KMK M70x1.5P	95	28	89	6-M5x20	82	6	7
KMK M70x2.0P	95	28	89	6-M5x20	82	6	7

Size	D	w	d1	n-txr	x	n	g
KMK M75x1.5P	100	28	94	6-M5x20	87	6	7
KMK M75x2.0P	100	28	94	6-M5x20	87	6	7
KMK M80x2.0P	110	32	103	6-M6x22	95	6	8
KMK M85x2.0P	115	32	108	6-M6x22	100	6	8
KMK M90x2.0P	120	32	113	6-M6x22	105	6	8
KMK M95x2.0P	125	32	118	6-M6x22	110	6	8
KMK M100x2.0P	130	32	123	6-M6x22	115	6	8
KMK M105x2.0P	135	32	128	6-M6x22	120	6	8
KMK M110x2.0P	140	32	133	6-M6x22	125	6	8
KMK M115x2.0P	145	34	138	6-M6x22	130	6	8
KMK M116x2.0P	145	34	138	6-M6x22	130	6	8
KMK M120x2.0P	155	36	146	6-M6x25	136	6	8
KMK M125x2.0P	160	36	150	6-M6x25	140	6	8
KMK M130x3.0P	165	36	156	6-M6x25	148	6	8
KMK M130x3.0P	165	36	156	6-M6x25	148	6	8
KMK M140x2.0P	180	38	168	6-M6x25	160	8	10
KMK M140x3.0P	180	38	168	8-M6x25	160	8	10
KMK M150x2.0P	190	38	178	8-M6x25	170	8	10
KMK M150x3.0P	190	38	178	8-M6x25	170	8	10
KMK M160x3.0P	205	40	193	8-M8x30	182	8	10
KMK M170x3.0P	215	40	204	8-M8x30	193	8	10
KMK M180x3.0P	230	40	216	8-M8x30	205	8	10
KMK M190x3.0P	240	40	226	8-M8x30	215	8	10
KMK M200x3.0P	245	40	234	8-M8x30	223	8	10
KMK M210x4.0P	265	40	253	8-M8x25	243	8	10
KMK M220x3.0P	265	40	255	8-M8x30	243	8	10
KMK M220x4.0P	265	40	253	8-M8x30	243	8	10
KMK M225x3.0P	275	42	260	8-M10x30	247	8	10
KMK M230x3.0P	275	42	265	8-M10x30	251	8	10
KMK M235x3.0P	285	42	270	8-M10x30	257	8	10
KMK M240x3.0P	285	42	275	8-M10x30	261	8	10
KMK M250x3.0P	295	42	285	8-M10x30	271	8	12
KMK M260x3.0P	305	42	295	8-M10x30	283	8	12
KMK M270x3.0P	315	42	305	8-M10x30	293	8	12
KMK M280x3.0P	325	42	315	8-M10x30	303	8	12
KMK M295x4.0P	340	42	331	8-M10x30	318	8	12
KMK M300x4.0P	345	42	335	8-M10x30	323	8	12

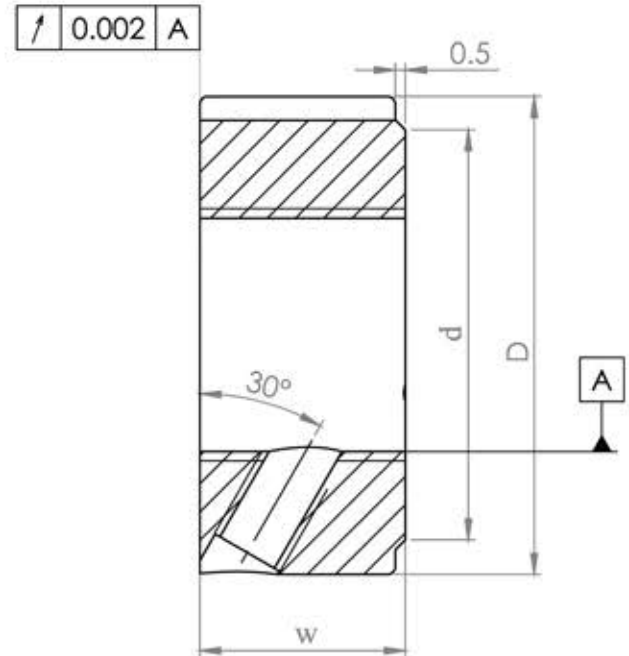
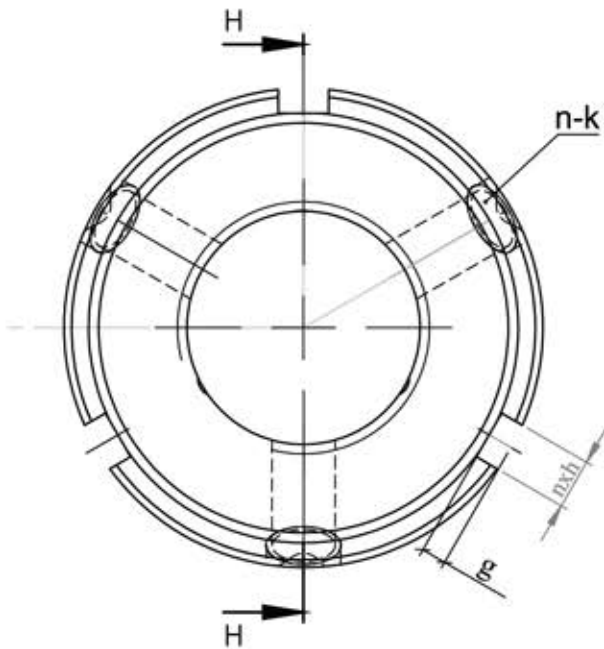
## KSF SERIES (FLANK LOCKING)

- KSF Locknuts are high-precision components with fast easy and efficient mounting.
- The nut is locked with the help of three radial brass locking pins.
- Locking washer and keyway are not required.
- KSF Locknut can be accurately located at right angles to the shaft.
- Thread Accuracy ISO 4H

- **Material** : EN19
- **Hardness** : HRC 28-32.
- **Manufacturing method** : High Precision Turning







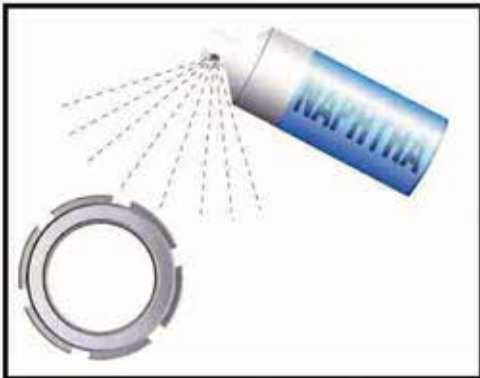
Size	D	w	d	nxh	g	n-k	MAX.Nm
KSF M17x1 OP	32	16	28	3-4	2	3-M5	4.5
KSF M20x1 OP	38	16	34	3-4	2	3-M5	4.5
KSF M20x1.5P	38	16	34	3-4	2	3-M6	8
KSF M22x1 5P	38	16	34	3-4	2	3-M6	8
KSF M24x1.5P	38	18	34	3-5	2	3-M6	8
KSF M25x1 5P	38	18	34	3-5	2	3-M6	8
KSF M30x1 5P	45	18	41	3-5	2	3-M6	8
KSF M33x1.5P	50	18	46	3-5	2	3-M6	8
KSF M35x1 5P	52	18	48	3-5	2	3-M8	18
KSF M40x1.5P	58	20	53	3-6	2.5	3-M8	18
KSF M45x1.5P	65	20	60	3-6	2.5	3-M8	18
KSF M50x1.5P	70	20	65	3-6	2.5	3-M8	18
KSF M55x1.5P	75	22	69	3-7	3	3-M8	18
KSF M55x2.0P	75	22	60	3-7	3	3-M8	18
KSF M60x2.0P	80	22	74	3-7	3	3-M8	18
KSF M65x2.0P	85	22	79	3-7	3	3-M8	18
KSF M70x2.0P	92	24	85	3-8	3.5	3-M8	18



Size	D	w	d	nxh	g	n-k	MAX.Nm
KSF M75x2.0P	98	24	91	3-8	3.5	3-M8	18
KSF M80x2.0P	105	24	98	3-8	3.5	3-M8	18
KSF M85x2.0P	110	24	103	3-8	3.5	3-M8	18
KSF M90x2.0P	120	26	112	6-10	4	3-M8	18
KSF M95x2.0P	125	26	117	6-10	4	3-M8	18
KSF M100x2.0P	130	26	122	6-10	4	3-M8	18
KSF M105x2.0P	140	28	132	6-10	4	3-M10	35
KSF M110x2.0P	145	28	137	6-10	4	3-M10	35
KSF M115x2.0P	150	28	142	6-10	4	3-M10	35
KSF M120x2.0P	155	30	145	6-12	5	3-M10	35
KSF M125x2.0P	160	30	150	6-12	5	3-M10	35
KSF M130x2.0P	165	30	155	6-12	5	3-M10	35
KSF M135x2.0P	175	32	165	6-12	5	3-M10	35
KSF M140x2.0P	180	32	170	6-12	5	3-M10	35
KSF M145x2.0P	190	32	180	6-12	5	3-M10	35
KSF M150x2.0P	195	32	185	6-12	5	3-M10	35
KSF M155x3.0P	200	34	188	6-14	6	3-M10	35
KSF M160x3.0P	210	34	198	6-14	6	3-M10	35
KSF M165x3.0P	210	34	198	6-14	o	3-M10	35
KSF M170x3.0P	220	34	208	6-14	o	3-M10	35
KSF M180x3.0P	230	36	216	6-16	7	3-M12	60
KSF M190x3.0P	240	36	226	6-16	7	3-M12	60
KSF M200x3.	250	38	236	6-16	7	3-M12	60
KSF M210x4.0P	270	38	250	6-16	8	3-M12	85
KSF M220x3.0P	270	38	250	6-20	10	3-M12	85
KSF M220x4.0P	270	38	250	6-20	10	3-M12	85
KSF M240x3.0P	290	38	270	6-20	10	3-M12	85
KSF M240x4.0P	290	38	270	6-20	10	3-M12	85
KSF M260x3.0P	310	38	290	6-20	10	3-M12	85
KSF M260x4.0P	310	38	290	6-20	10	3-M12	85
KSF M270x4.0P	320	38	300	6-20	10	3-M12	85
KSF M280x4.0P	330	38	310	6-20	10	3-M12	85
KSF M300x4.0P	360	42	336	6-24	12	3-M12	85

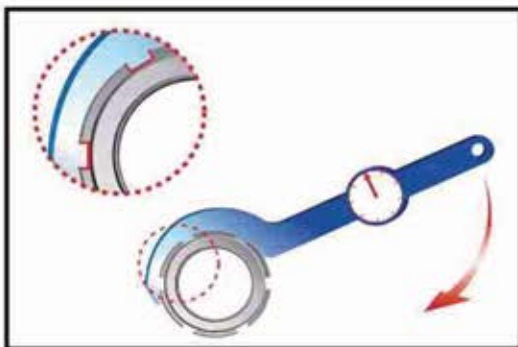
Locknuts Specification subject to change without prior notice.

## IMPORTANT NOTES ON INSTALLATION



✓ Clean the locknut with naphtha or appropriate industrial degreaser before installation.

✓ Apply a small drop of lubricant to inner threads.



✓ Use appropriate tools or spanner to set the correct preload.

✗ Avoid applying direct pressure to any single point.

